

SAFARI
BELTING

A CHIORINO GROUP COMPANY

PRODUCT CATALOG
2025

ULTRA-TUFF™

The NEW Standard for Plastic Modular Belting

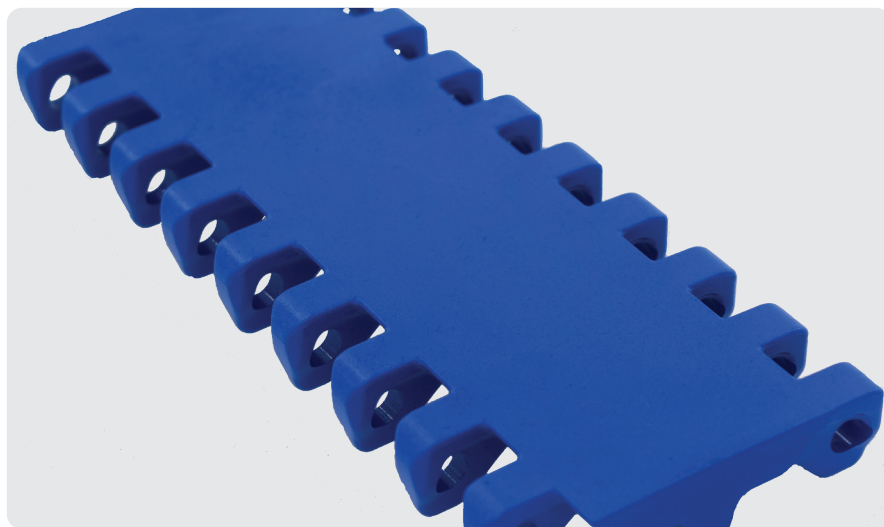
Available ONLY from Safari Belting Systems, Inc.





ULTRA-TUFF™
Proven Protection From Foreign Matter Contamination

Safari Belting Food Safety Innovations



Safari Belting Systems, Inc. introduces Ultra-Tuff™, a revolutionary new resin whose unique performance profile, offers manufacturers and OEMs, across multiple industries, a new solution for tough applications.



Extreme Impact Resistance

250% Greater impact resistance than Acetal.



Superior Chemical Resistance

Withstands constant exposure to PAA, sanitation and processing chemicals.



Exceptional Wear & Abrasion Resistance

Double (or more!) belt service life with zero broken modules.

ULTRA-TUFF™

Engineered Polymer for Today's Food Safety Requirements

ULTRA-TUFF™ is an "eco-friendly" polymer, whose backbone consists only of carbons. It is highly crystalline with a compact, crystal structure, resulting in unsurpassed impact, chemical and abrasion resistance. Safari Belting's **ULTRA-TUFF™**, is the only plastic modular belting on the market which can, simultaneously, withstand: High levels of drop-impact; Prolonged exposure to harsh chemicals (including PAA); and excessive wear from friction and/or abrasion.

ULTRA-TUFF™ is solving conveyor design and application performance problems, where impact resistance, chemical resistance, coefficient of friction and/or heat resistance cause traditional resins to be less than ideal.

Also available in **ULTRA-TUFF™ Flame Retardant** material with a **VO** rating.

ULTRA-TUFF XMD™

X-Ray and Metal Detectable

Safari Belting Systems' exclusive, high-performance, **ULTRA-TUFF™** product lines are available in a **Metal and X-Ray Detectable (XMD)** formulation, which meets or exceeds the 1.5 mm ferrous equivalent standard, while maintaining high impact, chemical and abrasion resistance, making it the premier detectable belting on the market. Because **ULTRA-TUFF™** is detectable by BOTH metal and x-ray detection equipment, it can be utilized across multiple applications, in numerous locations, making standardization simple.

Benefits

Dramatically Lower TCO

- Belting lasts 2 to 5 times longer
- Eliminating broken modules reduces downtime and maintenance expense
- Excellent release properties reduces trim loss

ULTRA-TUFF™ & ULTRA-TUFF XMD™

Belt Series & Styles

Safari Series 250 - Heavy Duty 2.5" Pitch



Solution for Challenging Applications

The Safari Series 250 ULTRA-TUFF™ belts can handle the daily punishment of applications like boning tables, ham classifiers, etc., where frequent belt replacement & broken module repairs are the accepted "status quo".

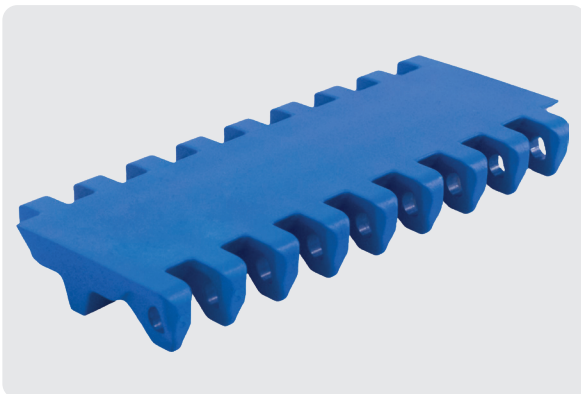
Surface Options

Flat Top, Cone Top & Mini Rib.

Accessories

Impact resistant, full & notched flights up to 4" tall.
Sprockets from 5.1" to 10.5" PD with 1.5" & 2.5" sq. bore.

Safari Series 225 - Heavy Duty 2.0" Pitch



Imagine...Zero Broken Modules

The Safari Series 225 ULTRA-TUFF™ belts can handle a wide variety of applications. These belts can be relied upon to do the day to day work on bone transfers, loin lines, dip-tanks, package handling and more...without frequent module repairs or down time. ULTRA-TUFF™ belts last more than twice as long as conventional Acetal belts and provide unparalleled operational stability.

Surface Options

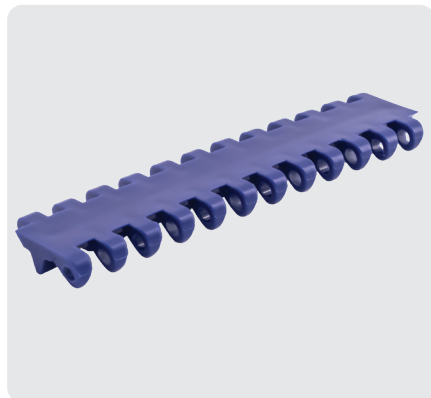
Flat Top, Dome Top, Cone Top, Threaded Cone Top, Mini Rib & Perforated 11/32" Round Holes with and without Dimples

Accessories

Impact resistant, full & notched flights up to 6" tall.
Impact resistant, full & notched cling-free flights up to 4" tall.
Scoop flights 3", 4" & 6" tall.
Sprockets from 5.2" to 10.3" PD with 1.5" & 2.5" sq. bore.

Safari Series 150

Standard Duty 1.0" Pitch



Reduce Trim Loss

ULTRA-TUFF™ inherently repels materials like fats & oils, giving it unparalleled product release properties. Utilize Safari Series 150 on trim lines for fast ROI.

Surface Options

Flat Top & Dome Top

Accessories

Impact resistant, cling-free flights up to 4" tall.
Sprockets from 2.0" to 6.4" with 1" to 1.5" bore.

Safari Series 125

Standard Duty 1.07" Pitch



High Heat + Abrasion Resistance

The Safari Series 125 ULTRA-TUFF™ belts, with 38% open area, provide a superior solution for applications like tortilla cooling lines and de-pan bakery applications, where high heat tolerance (up to 302°F) plus impact & abrasion resistance are required.

Surface Options

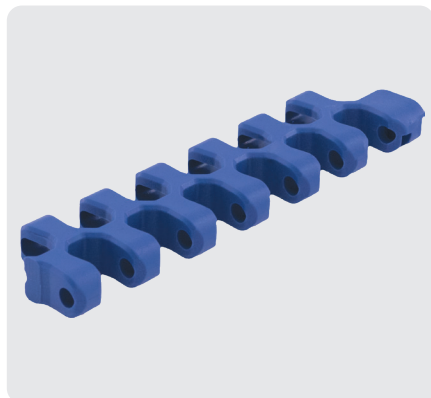
Flush Grid & Raised Rib

Accessories

Impact resistant full & notched flights up to 4" tall.
Sprockets from 2.1" to 8.2" with 1" to 2.5" bore.

Safari Series 500BHD

Radius 1.0" Pitch



Strength Through the Turn

The Safari Series 500BHD ULTRA-TUFF™ belts combine the mechanical attributes of impact, strength & abrasion with a robust knuckle design to provide unsurpassed performance in standard radius belts.

ULTRA-TUFF™ Surface Options

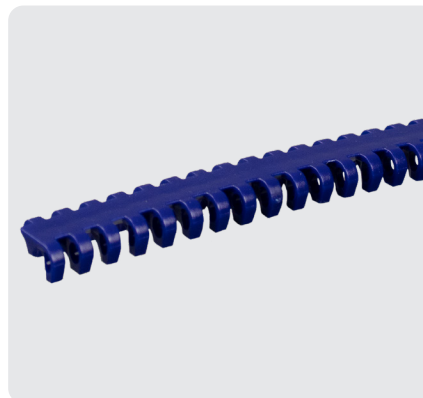
Flush Grid & High Deck

Accessories

Impact resistant flights up to 4" tall.
Sprockets from 3.9" to 7.9" with 1" to 2.5" bore.

Safari Series 1100

Standard Duty .60" Pitch



Nose-bar Transfers

The newest addition to the ULTRA-TUFF™ product line is the Safari Series 1100. This versatile belt provides ULTRA-TUFF™ options for tight, nose-bar transfers and small package handling.

ULTRA-TUFF™ Surface Options

Flat Top, Flush Grid and Cone-Top

Accessories

Impact resistant flights up to 2" tall.
Sprockets from 2.28" to 6.18" PD with 1" to 1.5" bore.

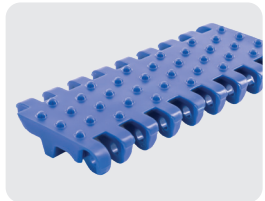
Popular Belting Conversions

SF-125D - Raised Rib - Replaces Intralox S900



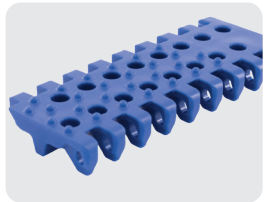
Pitch	1.07"
Thickness	.563"
Open Area	38%
Flights	NO
Conv Type	2

SF-225DN - Dimple Top - Replaces Intralox S800



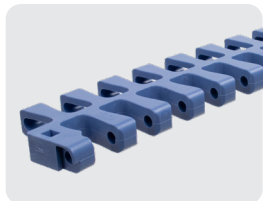
Pitch	2"
Thickness	.725"
Open Area	0%
Flights	YES
Conv Type	1

SF-2250DN - Round Hole Dimple - Replaces Intralox S800



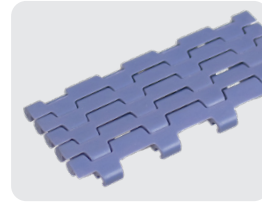
Pitch	2"
Thickness	.725"
Open Area	14%
Flights	YES
Conv Type	1

SF-300BHD - Radius Flush Grid - Replaces Intralox S2200



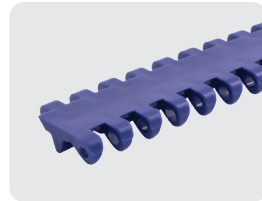
Pitch	1.77"
Thickness	.6"
Open Area	38%
Flights/Rollers	NO/YES
Conv Type	3

SF-5A - Micro Pitch Flat Top - Replaces Intralox S560



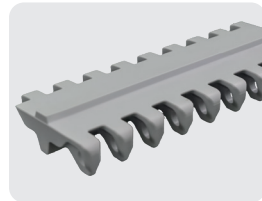
Pitch	.20"
Thickness	.16"
Open Area	0%
Flights	NO
Conv Type	3

SF-150A - Flat Top - Replaces Intralox S1600



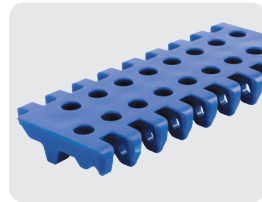
Pitch	1"
Thickness	.4"
Open Area	0%
Flights	YES
Conv Type	1

SF-225E - Mini Rib - Replaces Intralox S800



Pitch	2"
Thickness	.755"
Open Area	0%
Flights	YES
Conv Type	1

SF-2250N - 11/32" Round Hole - Replaces Intralox S800



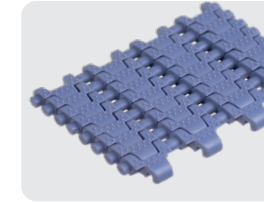
Pitch	2"
Thickness	.625"
Open Area	14%
Flights	YES
Conv Type	1

SF-300BDEL - Radius Grip Top - Replaces Intralox S2200



Pitch	1.77"
Thickness	.8"
Open Area	38%
Flights	NO
Conv Type	3

SF-58D - Micro Pitch Flush Grid Dimple Top - Replaces Intralox S560



Pitch	.20"
Thickness	.256"
Open Area	8%
Flights	NO
Conv Type	3

SF-150D - Dimple Top - Replaces Intralox S1600



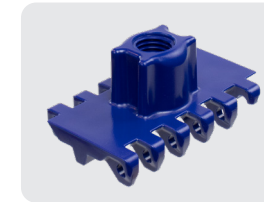
Pitch	1"
Thickness	.475"
Open Area	0%
Flights	YES
Conv Type	1

SF-225ELN - Grip Top - Replaces Intralox S800



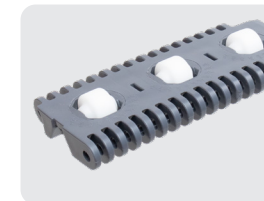
Pitch	2"
Thickness	.705"
Open Area	0%
Flights	YES
Conv Type	1

SF-225TD - Threaded Cone Top - Replaces Intralox S800



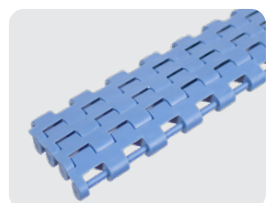
Pitch	2"
Thickness	.625"
Open Area	0%
Flights	YES
Conv Type	1

SF-400C - Inline Roller Top - Replaces Intralox S400
Roller Top



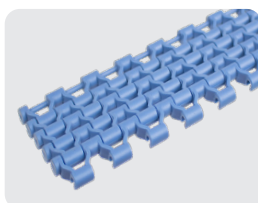
Pitch	2"
Thickness	.625"
Open Area	10%
Flights	NO
Conv Type	3

SF-10A - Micro Pitch Flat Top - Replaces Intralox S560



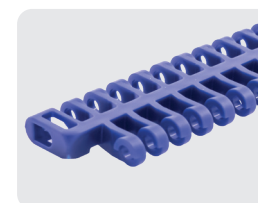
Pitch	.39"
Thickness	.276"
Open Area	0%
Flights	NO
Conv Type	3

SF-10B- Micro Pitch Flush Grid
- Replaces Intralox S560



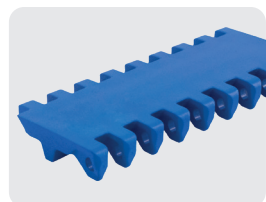
Pitch	.39"
Thickness	.276"
Open Area	24%
Flights	NO
Conv Type	3

SF-125B - Flush Grid - Replaces Intralox S900



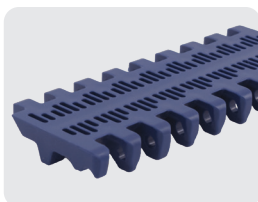
Pitch	1.07"
Thickness	.344"
Open Area	38%
Flights	YES
Conv Type	2

SF-225AN - Flat Top - Replaces Intralox S800



Pitch	2"
Thickness	.625"
Open Area	0%
Flights	YES
Conv Type	1

SF-225BN - Perforated Flat Top - Replaces Intralox S800



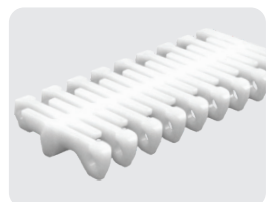
Pitch	2"
Thickness	.625"
Open Area	18%
Flights	YES
Conv Type	1

SF-225CN - Roller Top - Replaces Intralox S800



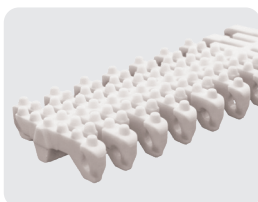
Pitch	2"
Thickness	1.06"
Open Area	0%
Flights	YES
Conv Type	1

SF-225FGN - Flush Grid - Replaces Intralox S800



Pitch	2"
Thickness	.563"
Open Area	27%
Flights	YES
Conv Type	2

SF-225FDN - Flush Grid Dimple Top - Replaces Intralox S800



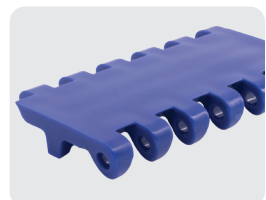
Pitch	2"
Thickness	.625"
Open Area	0%
Flights	YES
Conv Type	2

SF-225H - Cone Top - Replaces Intralox S800



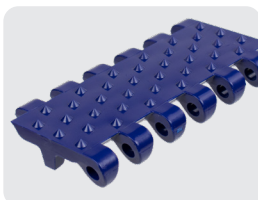
Pitch	2"
Thickness	.625"
Open Area	0%
Flights	YES
Conv Type	1

SF-250A - Flat Top - Replaces Intralox S1800



Pitch	2.5"
Thickness	.725"
Open Area	0%
Flights	YES
Conv Type	2

SF-250D - Cone Top - Replaces Intralox S1800



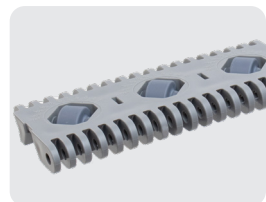
Pitch	2.5"
Thickness	.88"
Open Area	0%
Flights	YES
Conv Type	2

SF-250E - Mini Rib - Replaces Intralox S1800



Pitch	2.5"
Thickness	.855"
Open Area	0%
Flights	YES
Conv Type	2

SF-400RAM - Angled Roller Top - Replaces Intralox S400 ARB



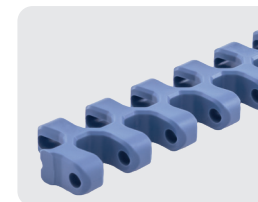
Pitch	2"
Thickness	.625"
Open Area	10%
Flights	NO
Conv Type	3

SF-409C - Roller Top - Replaces Intralox S400 Transverse Roller Top



Pitch	2"
Thickness	.625"
Open Area	10%
Flights	NO
Conv Type	3

SF-500BHD - Radius Flush Grid - Replaces Intralox S2400



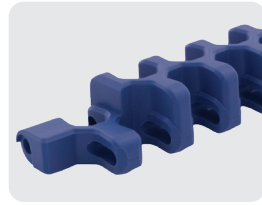
Pitch	1"
Thickness	.5"
Open Area	36%
Flights	YES
Conv Type	2

SF-500BHDEL - Radius Grip Top - Replaces Intralox S2400



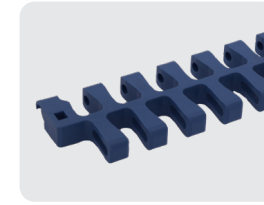
Pitch	1"
Thickness	.70"
Open Area	36%
Flights	YES
Conv Type	2

SF-500BHDD - Radius High Deck - Replaces Intralox S2400



Pitch	1"
Thickness	.9"
Open Area	36%
Flights	NO
Conv Type	2

SF-500B - Radius Flush Grid - Replaces Habasit M2540



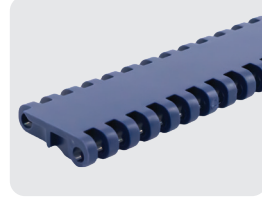
Pitch	1"
Thickness	.52"
Open Area	36%
Flights/Rollers	NO/YES
Conv Type	1

SF-502ELHD - Grip Top - Replaces Uni QNB-C



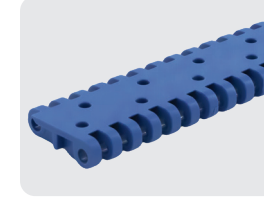
Pitch	1"
Thickness	.52"
Open Area	0%
Flights	YES
Conv Type	1

SF-700AN - Flat Top - Replaces Intralox S900



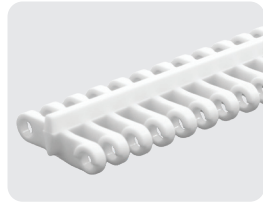
Pitch	1.07"
Thickness	.384"
Open Area	0%
Flights	YES
Conv Type	1

SF-700ABN - Perforated Flat Top - Replaces Intralox S900



Pitch	1.07"
Thickness	.384"
Open Area	6%
Flights	YES
Conv Type	1

SF-700GN - Open Grid - Intralox S900



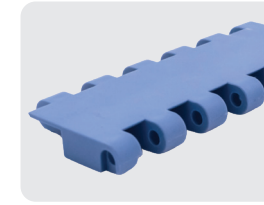
Pitch	1.07"
Thickness	.563"
Open Area	38%
Flights	YES
Conv Type	1

SF-700MTN - Mesh Top - Replaces Intralox S900



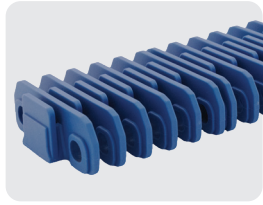
Pitch	1.07"
Thickness	.384"
Open Area	24%
Flights	YES
Conv Type	1

SF-900A - Flat Top - Replaces Habasit M5020



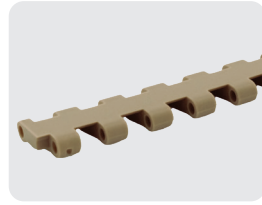
Pitch	2"
Thickness	.55"
Open Area	0%
Flights	YES
Conv Type	2

SF-901DHD - Flush Grid Raised Rib - Replaces Rexnord RR2000



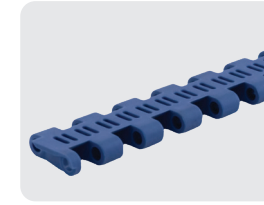
Pitch	2"
Thickness	.95"
Open Area	36%
Flights	NO
Conv Type	1

SF-1000A - Flat Top - Replaces Uni Light C



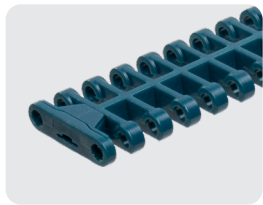
Pitch	.75"
Thickness	.33"
Open Area	0%
Flights	YES
Conv Type	1

SF-1000B - Perforated Flat Top - Replaces Uni Light 10%



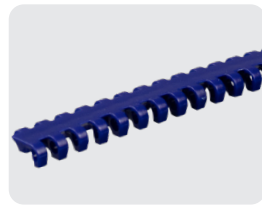
Pitch	.75"
Thickness	.33"
Open Area	27%
Flights	YES
Conv Type	1

SF-F1000B - Flush Grid - Rexnord 1000



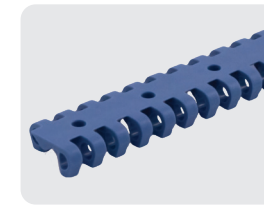
Pitch	1"
Thickness	.339"
Open Area	42%
Flights	NO
Conv Type	1

SF-1100AN - Flat Top - Intralox S1100



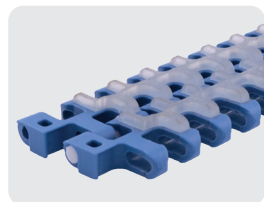
Pitch	.6"
Thickness	.344"
Open Area	0%
Flights	YES
Conv Type	1

SF-1100ABN - Perforated Flat Top - Replaces Intralox S1100



Pitch	.6"
Thickness	.344"
Open Area	3%
Flights	YES
Conv Type	1

SF-500EL - Radius Grip Top - Replaces Habasit M2540



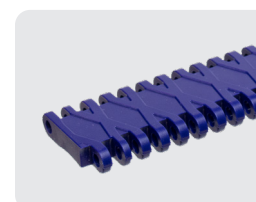
Pitch	1"
Thickness	.6"
Open Area	36%
Flights	YES
Conv Type	1

SF-502AHD - Flat Top - Replaces Uni QNB



Pitch	1"
Thickness	.35"
Open Area	0%
Flights	YES
Conv Type	1

SF-502DHD - Textured Flat Top - Replaces Uni JCB



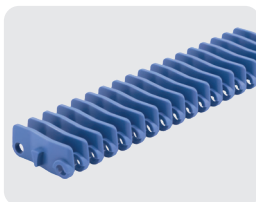
Pitch	1"
Thickness	.35"
Open Area	0%
Flights	YES
Conv Type	1

SF-700BN - Flush Grid - Replaces Intralox S900



Pitch	1.07"
Thickness	.384"
Open Area	38%
Flights	YES
Conv Type	1

SF-700DN - Raised Rib - Replaces Intralox S900



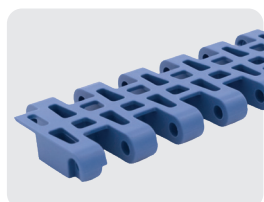
Pitch	1.07"
Thickness	.4"
Open Area	38%
Flights	NO
Conv Type	1

SF-700ELN - Square Grip Top - Replaces Intralox S900



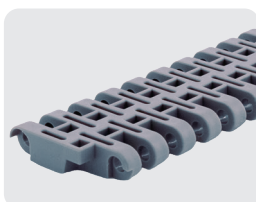
Pitch	1.07"
Thickness	.584"
Open Area	0%
Flights	YES
Conv Type	1

SF-900B - Flush Grid - Replaces Habasit M5033



Pitch	2"
Thickness	.55"
Open Area	37%
Flights	YES
Conv Type	2

SF-900BHD - Flush Grid - Replaces Habasit M5032



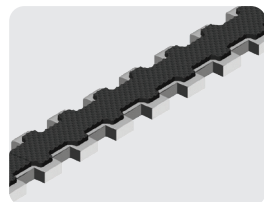
Pitch	2"
Thickness	.63"
Open Area	32%
Flights/Rollers	YES
Conv Type	1

SF-901B - Flush Grid - Intralox S400



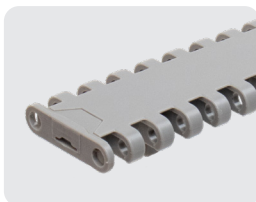
Pitch	2"
Thickness	.63"
Open Area	18%
Flights	YES
Conv Type	2

SF-1000EL - Grip Top - Replaces Uni Light Rubber Top



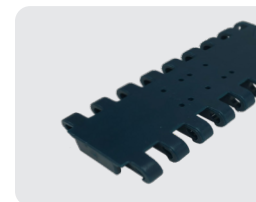
Pitch	.75"
Thickness	.41"
Open Area	0%
Flights	YES
Conv Type	1

SF-F1000A - Flat Top - Rexnord 1000



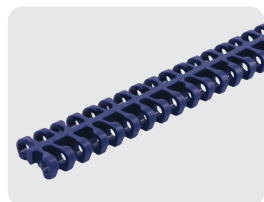
Pitch	1"
Thickness	.339"
Open Area	0%
Flights	NO
Conv Type	1

SF-F1000AB - Perforated Flat Top - Rexnord 1000



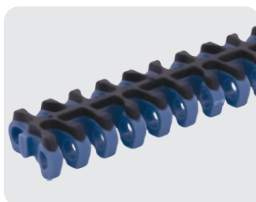
Pitch	1"
Thickness	.339"
Open Area	1%
Flights	NO
Conv Type	1

SF-1100BN - Flush Grid - Replaces Intralox S1100



Pitch	.6"
Thickness	.344"
Open Area	28%
Flights	YES
Conv Type	1

SF-1100BNEL - Flush Grid Grip Top - Replaces Intralox S1100



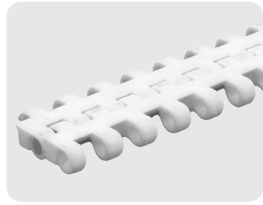
Pitch	.6"
Thickness	.429"
Open Area	28%
Flights	YES
Conv Type	1

SF-1100D - Cone Top - Replaces Intralox S1100



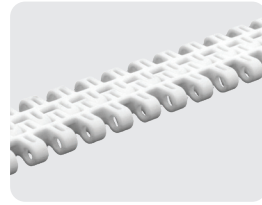
Pitch	.6"
Thickness	.37"
Open Area	0%
Flights	NO
Conv Type	1

SF-1200A - Flat Top - Replaces Habasit M1220



Pitch	.5"
Thickness	.334"
Open Area	0%
Flights	NO
Conv Type	2

SF-1200B - Flush Grid - Replaces Habasit M1230



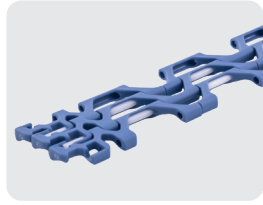
Pitch	.5"
Thickness	.334"
Open Area	19%
Flights	NO
Conv Type	2

SF-1400A - Flat Top - Replaces Intralox S1400



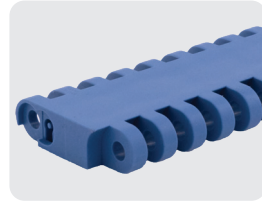
Pitch	1"
Thickness	.5"
Open Area	0%
Flights	NO
Conv Type	1

SF-1500BN - Flush Grid - Replaces Intralox S1500



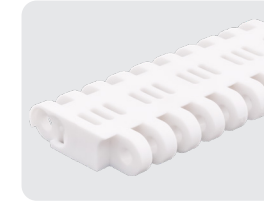
Pitch	.5"
Thickness	.25"
Open Area	48%
Flights	YES
Conv Type	1

SF-1600A - Flat Top - Replaces Uni CPB



Pitch	2"
Thickness	.75"
Open Area	0%
Flights	NO
Conv Type	3

SF-1600B - Perforated Flat Top - Replaces Uni CPB



Pitch	2"
Thickness	.75"
Open Area	11%
Flights	NO
Conv Type	3

SF-1800B - Perforated Flat Top - Replaces Uni XLB M2



Pitch	2.5"
Thickness	1"
Open Area	10%
Flights	PUSHER
Conv Type	3

SF-1800D - Textured Flat Top - Replaces Uni XLB M2



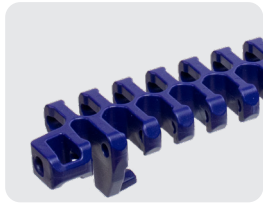
Pitch	2.5"
Thickness	1.04"
Open Area	0%
Flights	PUSHER
Conv Type	3

SF-1800E - Groove Top - Replaces Uni XLB M2 U8



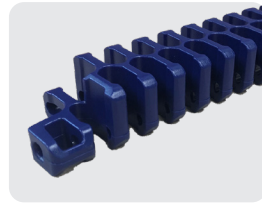
Pitch	2.5"
Thickness	1"
Open Area	0%
Flights	PUSHER
Conv Type	3

SF-2400BGB - Radius Flush Grid with Hold Down Tabs
- Replaces Intralox S2400 Flush Grid



Pitch	1"
Thickness	.5"
Open Area	42%
Flights	YES
Conv Type	1

SF-2400D - Radius High Deck Flush Grid - Replaces
Intralox S2400 Flush Grid



Pitch	1"
Thickness	.9"
Open Area	42%
Flights	NO
Conv Type	1

SF-2400R - Radius Raised Rib - Replaces Intralox
S2400 Raised Rib



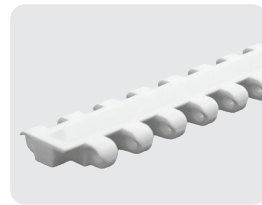
Pitch	1"
Thickness	.9"
Open Area	42%
Flights	NO
Conv Type	1

SF-2500D - Raised Rib - Replaces Habasit M2531



Pitch	1"
Thickness	.634"
Open Area	39%
Flights	NO
Conv Type	1

SF-2500E - Mini Rib - Replaces Habasit M2527



Pitch	1"
Thickness	.512"
Open Area	0%
Flights	YES
Conv Type	1

SF-2500EL - Grip Rib - Replaces Habasit M2527



Pitch	1"
Thickness	.55"
Open Area	0%
Flights	YES
Conv Type	1

SF-1400D - Textured Top - Replaces Intralox S1400



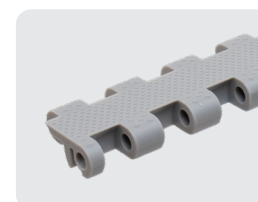
Pitch	1"
Thickness	.5"
Open Area	0%
Flights	NO
Conv Type	1

SF-1400EL - Grip Top - Replaces Intralox S1400



Pitch	1"
Thickness	.5"
Open Area	0%
Flights	NO
Conv Type	1

SF-1400ZS - Embedded Diamond Top - Replaces Intralox S1400



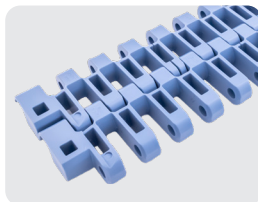
Pitch	1"
Thickness	.5"
Open Area	0%
Flights	NO
Conv Type	1

SF-1600D - Textured Flat Top - Replaces Uni CPB



Pitch	2"
Thickness	.78"
Open Area	0%
Flights	NO
Conv Type	3

SF-1700B - Flush Grid - Replaces Intralox S1700



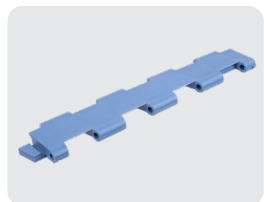
Pitch	1.5"
Thickness	.75"
Open Area	37%
Flights	YES
Conv Type	1

SF-1800A - Flat Top - Replaces Uni XLB M2



Pitch	2.5"
Thickness	1"
Open Area	0%
Flights	PUSHER
Conv Type	3

SF-2000A - Zero Tangent - Replaces Intralox S2100



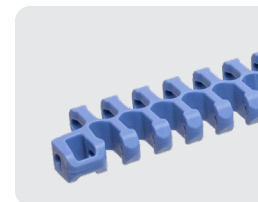
Pitch	23.6"
Thickness	.39"
Open Area	0%
Curve	YES
Conv Type	3

SF-2400A - Radius Flat Top - Replaces Intralox S2400 Radius Flat Top



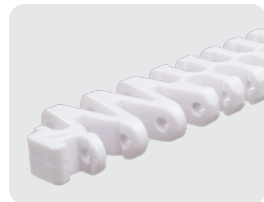
Pitch	1"
Thickness	.5"
Open Area	0%
Flights	YES
Conv Type	1

SF-2400B - Radius Flush Grid - Replaces Intralox S2400 Radius Flush Grid



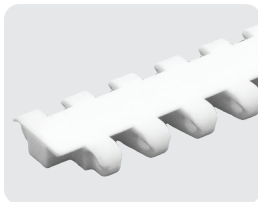
Pitch	1"
Thickness	.5"
Open Area	42%
Flights	YES
Conv Type	1

SF-2400T - Tight Turn Radius Flush Grid - Replaces Intralox S2400 Tight Turn Flush Grid



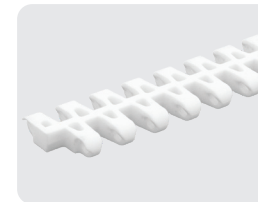
Pitch	1"
Thickness	.5"
Open Area	42%
Flights	YES
Conv Type	1

SF-2500A - Flat Top - Replaces Habasit M2520



Pitch	1"
Thickness	.4"
Open Area	0%
Flights	YES
Conv Type	1

SF-2500B - Flush Grid - Replaces Habasit M2533



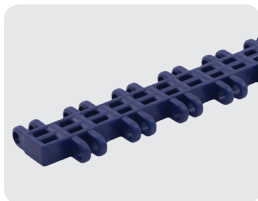
Pitch	1"
Thickness	.4"
Open Area	32%
Flights	YES
Conv Type	1

SF-2600B - Flush Grid - Replaces Habasit F51/Uni OWL



Pitch	1"
Thickness	.433"
Open Area	44%
Flights	NO
Conv Type	3

SF-3000B - Flush Grid - Replaces Uni SNB M2 34%



Pitch	1"
Thickness	.386"
Open Area	25%
Flights	NO
Conv Type	3

SF-3200A - Flat Top - Replaces Intralox S1000



Pitch	.6"
Thickness	.34"
Open Area	0%
Flights	NO
Conv Type	1

SF-3200C - Roller Top - Replaces Intralox S1000



Pitch	.6"
Thickness	.453"
Open Area	10%
Flights	NO
Conv Type	1

SF-3200EL - Grip Top - Replaces Intralox S1000



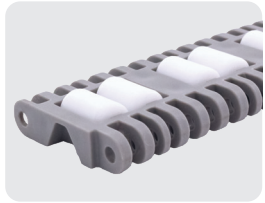
Pitch	.6"
Thickness	.433"
Open Area	0%
Flights	NO
Conv Type	1

SF-38003C - Angled Roller Top - Replaces Angled Roller Top Belts



Pitch	2"
Thickness	.748"
Open Area	3%
Flights	NO
Conv Type	2

SF-39003C - Transverse Roller Top - Replaces Transverse Roller Top Belts



Pitch	2"
Thickness	.787"
Open Area	14%
Flights	NO
Conv Type	3

SF-6800A - Flat Top - Replaces Uni ACB



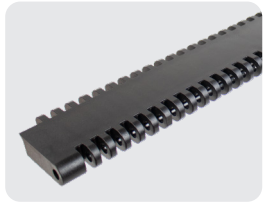
Pitch	1.5"
Thickness	.748"
Open Area	0%
Flights	NO
Conv Type	3

SF-6800D - Textured Flat Top - Replaces Uni ACB



Pitch	1.5"
Thickness	.75"
Open Area	0%
Flights	NO
Conv Type	3

SF-6990A - Flat Top - Replaces Rexnord 6995



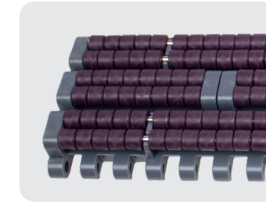
Pitch	2.25"
Thickness	.717"
Open Area	0%
Flights	Pushers
Conv Type	1

SF-6990D - Textured Top - Replaces Rexnord 6999



Pitch	2.25"
Thickness	.717"
Open Area	0%
Flights	Pushers
Conv Type	1

SF-1005LBP - Low Back Pressure Roller Top - Replaces Rexnord LBP1005



Pitch	1.0"
Thickness	.79"
Open Area	0%
Flights	NO
Conv Type	1

CONVERSION KEY

- TYPE 1 SPLICE-IN + SAME SPROCKET
- TYPE 2 SAME SPROCKETS (NO SPLICE)
- TYPE 3 SPROCKET CHANGE REQUIRED

ACCESSORIES

STREAMLINE FLIGHTS

(Smooth Surface - Full & Notched)



SERIES	HEIGHT
125	Up to 3"
225	Up to 6"
250	Up to 4"
502	Up to 1"
700	Up to 4"
900	Up to 6"
900BHD	7/16"
901	Up to 4"
1000	Up to 6"
1100	Up to 2"
1500	Up to 1"
1700	Up to 3"
2400	Up to 3"
2500	Up to 3"

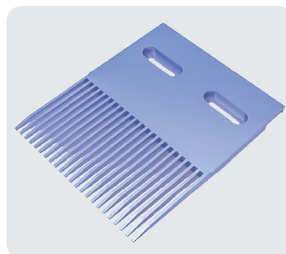
CLING-FREE FLIGHTS

(Ridge Surface - Full & Notched)



SERIES	HEIGHT
125	Up to 4"
150	Up to 4"
225	Up to 4"
500BHD	Up to 4"
2400	Up to 3"

Finger Plates



SERIES

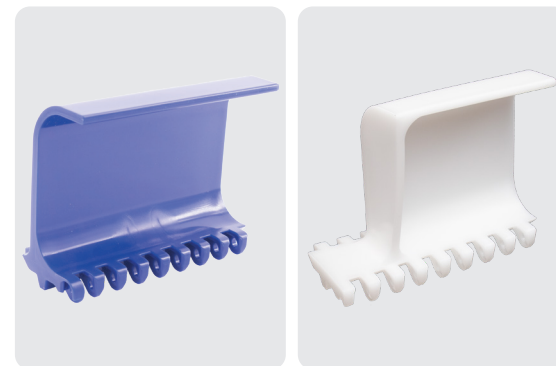
125D

700DN

901DHD

SCOOP* & BUCKET FLIGHTS

(Smooth Surface - Full & Notched)



SERIES

225

HEIGHT

3", 4", 6"

* Custom flight with 11/32" holes available

Pusher



SERIES HEIGHT

1800 2"

6990 2"

STANDARD



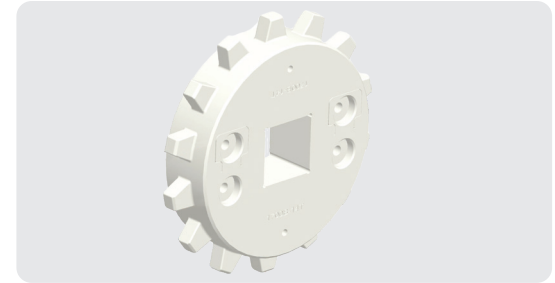
- SERIES 5**
44T-SPLIT
10T
13T
- SERIES 10**
8T
12T
24T
- SERIES 125**
6T
9T
10T
12T
18T
24T
- SERIES 150**
6T
8T
10T
12T
16T
20T
- SERIES 225**
6T
8T
10T
12T
16T
- SERIES 250**
6T
8T
- SERIES 300BHD**
8T
12T
- SERIES 400**
6T
8T-SPLIT
10T-SPLIT
12T-SPLIT
16T-SPLIT
- SERIES 500BHD**
12T
18T
24T
8T-2R
12T-2R
15T-2R
18T-2R
21T-2R
24T-2R
- SERIES 502AHD**
10T
12T
15T
18T
12T-SPLIT
15T-SPLIT
18T-SPLIT
19T-SPLIT
24T-SPLIT

TWO-ROW (2R)



- SERIES 700**
6T
9T
10T
12T
18T
20T
24T
- SERIES 900**
6T
9T
12T
- SERIES 900BHD**
8T
9T
10T
12T
16T
- SERIES 901B**
6T
8T
8T-SPLIT
10T
12T
16T
17T
- SERIES 901DHD**
12T
16T
- SERIES 1000**
7T
10T
17T
24T
- SERIES F1000**
12T-2R
16T-2R
18T-2R
20T-2R
- SERIES 1100**
12T
16T
24T
32T
12T-2R
16T-2R
18T-2R
20T-2R
24T-2R
26T-2R
32T-2R
- SERIES 1200**
10T
15T
19T
24T
28T

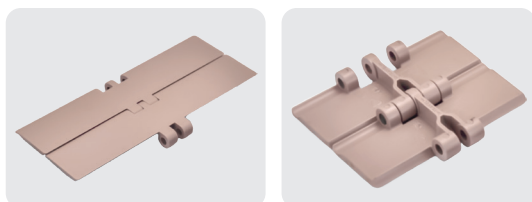
SPLIT



- SERIES 1400**
12T
15T
18T
24T
16T-SPLIT
21T-SPLIT
- SERIES 1500**
10T
12T
14T
17T
24T
36T
- SERIES 1600**
12T
15T
18T
- SERIES 1800**
10T
13T
15T
- SERIES 2500**
8T-2R
10T-2R
12T-2R
15T-2R
16T-2R
18T-2R
20T-2R
20T-2R SPLIT
- SERIES 3200**
16T
24T
32T
- SERIES 3900CN**
6T
8T
8T-SPLIT
10T
12T
16T
17T
- SERIES 6800**
10T
- SERIES 6990**
10T
- SERIES 1005LBP**
12T
18T
12T-2R
15T-2R
18T-2R
21T-2R
24T-2R

Low-Friction Plastic Chain

LFS-820 & LFS-820 EL



Pitch

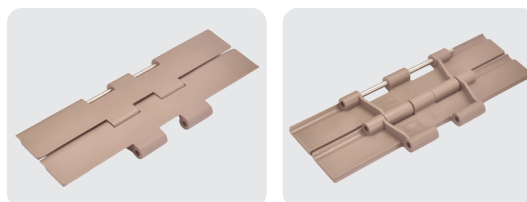
1.5"

Thickness

.189"

- **K250** (2.5" wide)
- **K325** (3.25" wide)
- **K350** (3.5" wide)
- **K400** (4" wide)
- **K450** (4.5" wide)
- **K600** (6" wide)
- **K750** (7.5" wide)

LFS-821 & LFS-821 EL



Pitch

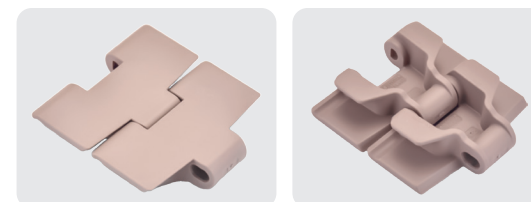
1.5"

Thickness

.189"

- **K750** (7.5" wide)
- **K1000** (10" wide)
- **K1200** (12" wide)

LFS-880TAB & LFS-880TAB EL



Pitch

1.5"

Radius By Width

18", 19.7", 22", 24"

Thickness

.157"

- **K325** (3.25" wide)
- **K450** (4.5" wide)
- **K600** (6" wide)
- **K750** (7.5" wide)

LFS-882TAB & LFS-882TAB EL



Pitch

1.5"

Radius

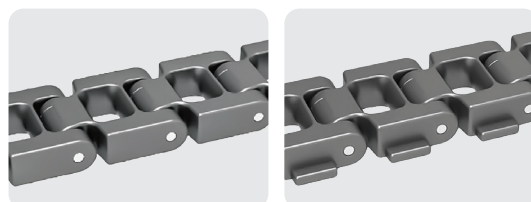
24"

Thickness

.189"

- **K450** (4.5" wide)
- **K600** (6" wide)
- **K750** (7.5" wide)
- **K1000** (10" wide)
- **K1200** (12" wide)

LFS-F3000A & F3000A TAB



Pitch

2.0"

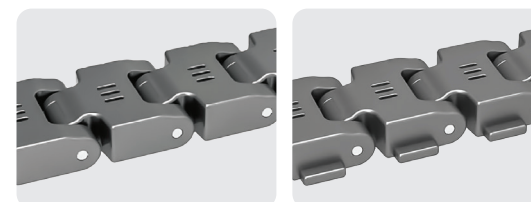
Radius

24"

Thickness

.91"

LFS-F3000B & F3000B TAB



Pitch

2.0"

Radius

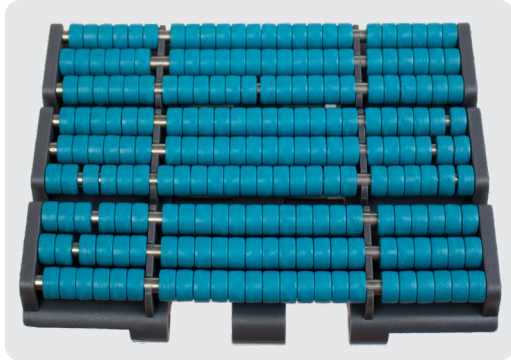
24"

Thickness

.91"

Low Back Pressure
Plastic Chain

LBP - 821

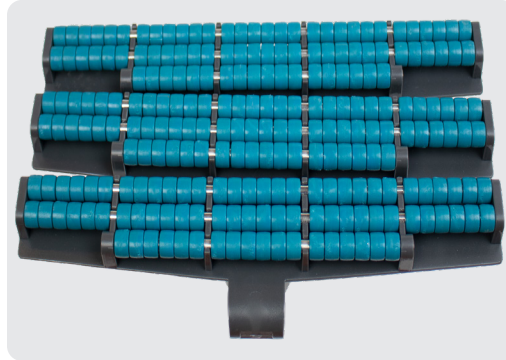


Pitch 1.5"

Thickness 1.12"

- **K750** (7.5" wide) ▪ **K1200** (12" wide)
- **K1000** (10" wide)

LBP 882TAB



Pitch 1.5"

Thickness .189"

- **K375** (3.75" Wide) ▪ **K1000** (10" wide)
- **K450** (4.5" wide) ▪ **K1200** (12" wide)
- **K750** (7.5" wide)



Our Story

SAFARI BELTING SYSTEMS, INC.



Safari Belting Systems, Inc. is an American, small-business, success story. How did we do it? We found people who share our core values... and we went to work.



DELIVER EXCELLENCE



WORK TIRELESSLY



INSPIRE OTHERS

Safari Belting has come a long way since its launch in 2005 with a single, patented plastic modular belt design.

Most thought Chris Smith, founder and President, was crazy to leave his successful career with the industry's dominant belting manufacturer, to start his own company, which would have to compete with his former employer...in order to survive.

However, those who were convinced he would not succeed, failed to recognize the impact of his absolute, unwillingness to fail. Today, with over 400 belting solutions, operating in plants around the world, Safari Belting continues to

grow and challenge industry norms by focusing on solutions... not sales.

With Meat and Poultry processors as its core customers, Safari Belting focuses its R&D efforts on improving the food safety performance of modular plastic belting.

ULTRA-TUFF™, developed by Safari Belting to address the root causes of foreign matter contamination, is just one of the successful outcomes of the company's on-going investment in food safety technologies. Exciting new pathogen control and sanitation innovations are in development. Stay tuned. We are just getting started!

We believe, if we can't solve a problem, save you money, or both... we haven't earned your business. We are confident that Safari Belting will become your trusted, long-term, belting solutions, provider.

In 2021, Safari Belting Systems, LLC was acquired by Chiorino S.p.A., an international leading company in the full-cycled production of light-weight conveyor and transmission belting solutions for any application, in any industrial field, founded in 1906 in Biella (Italy). Thanks to this integration, Safari Belting Systems, LLC is leading the way to the future of conveyance with its ground-breaking belting designs and materials.

CONTACT US

Safari Belting Systems, LLC.
220 North Mahaffie Street
Olathe, KS, 66061
T: (888) 662-6611
F: (888) 234-3070
E: Info@SafariBelting.com

Chiorino S.p.A.
Via Sant'Agata, 9
13900 Biella - Italia
T: +390158489.1
F: +390158489161
E: chiorino@chiorino.com