

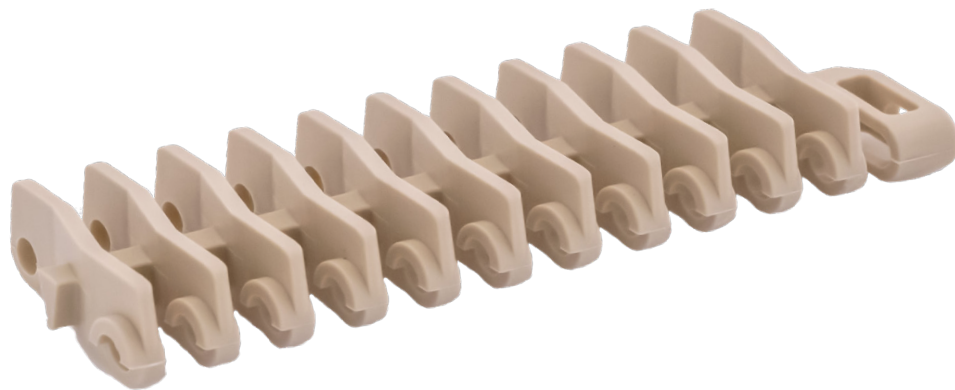


SF-700DHD

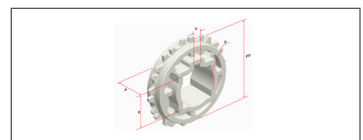
Raised Rib Heavy Duty Edge 1.07" Pitch

Category 2 Replacement for:
Intralox 900

*Non-Headed Rods



Pitch	Thickness	Min Width	Rod	Open Area	Flights	Side Guards
1.07"	.563"	2"	.18"	38%	No	No
27.2mm	14.3mm	51mm	4.5mm			



Belt Material	Standard Rod Material	Belt Strength		Temperature Fahrenheit		Belt Weight Lb/Ft ²	Colors
		Straight Lb/Ft	Curved Lb/Ft	Min	Max		
PP	PP	705	-	34°	220°	1.05	W, G, B, T
PE	POM	355	-	-50°	150°	1.1	N, B
POM	PP	1485	-	-50°	150°	1.6	W, B, G
ULTRA-TUFF™	POM	1766	-	32°	302°	1.26	N, W, DB
ULTRA-TUFF XMD™	POM	1766	-	32°	302°	1.40	RB

# of Teeth	PD	Bore Size
6	2.1"	1"R, 1"S
9	3.1"	1"R, 1.5"S
10	3.5"	1"R, 1.5"S
12	4.09"	1"R, 1.5"S
18	6.1"	1.5", 2.5"S
20-Split	6.8"	2.5"S

Additional Sprockets Available

Belt Standard Alterations	+/- .33"
Flight Standard Indent	N/A

W-White, B-Blue, DB-Dark Blue, RB-Royal Blue, N-Natural, G-Gray, BK-Black, BR-Brown, T-Tan,
XMD-XRAY & Metal Detectable



A CHIORINO GROUP COMPANY