

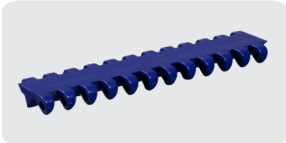
# Conversion Chart



## CATEGORY 1

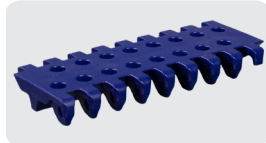
### SPLICE-IN + SAME SPROCKETS

#### Series 150 (1" Pitch)



Replaces Intralox  
S1600  
(Flat & Dimple)

#### Series 225 (2" Pitch)



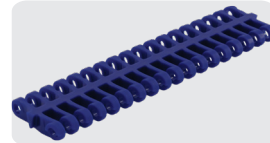
Replaces Intralox  
S800  
(Flat, Heavy Duty Edge,  
Perforated Flat, Roller,  
Dimple, Mini Rib, Cone,  
Threaded Cone, Grip,  
11/32" Round Hole, & 11/32"  
Round Hole Dimple)

#### Series 502 (1" Pitch)



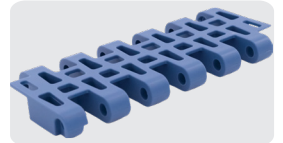
Replaces Uni QNB  
& JCB  
(Flat, Grip, & Textured  
Flat)

#### Series 700 (1.07" Pitch)



Replaces Intralox  
S900  
(Flat, Perforated Flat,  
Flush Grid, Raised Rib,  
Square Grip, Open  
Grid, & Mesh)

#### Series 900B (2" Pitch)



Replaces Habasit  
M5033  
(Flush Grid)

#### Series 1000 (.75" Pitch)



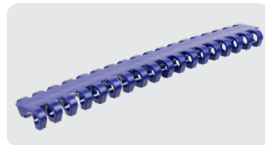
Replaces Uni Light  
(Flat, Perforated Flat, &  
Grip)

#### Series F1000 (1" Pitch)



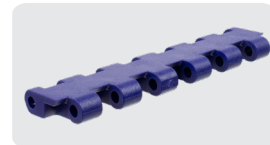
Replaces Rexnord  
1000  
(Flat, Perforated Flat, &  
Flush Grid)

#### Series 1100 (.6" Pitch)



Replaces Intralox  
S1100  
(Flat, Perforated Flat,  
Flush Grid, Flush Grid  
Crip, & Cone)

#### Series 1400 (1" Pitch)



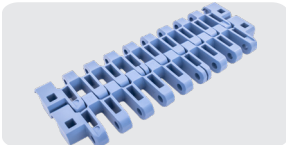
Replaces Intralox  
S1400  
(Flat, Grip, Diamond, &  
Embedded Flat)

#### Series 1500B (.5" Pitch)



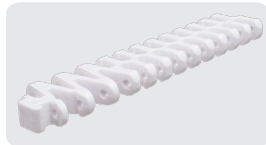
Replaces Intralox  
S1500  
(Flush Grid)

#### Series 1700 (1.5" Pitch)



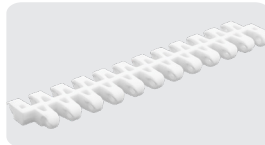
Replaces Intralox  
S1700  
(Flush Grid)

#### Series 2400 (1" Pitch)



Replaces Intralox  
S2400  
(Radius Flat, Flush Grid,  
Flush Grid w/Hold Down  
Tabs, High Deck, Raised  
Rib, & Tight Turn)

#### Series 2500 (1" Pitch)



Replaces Habasit  
M2500  
(Flat, Flush Grid, Raised  
Rib, Grip, & Mini Rib)

#### Series 3200 (.6" Pitch)



Replaces Intralox  
S1000  
(Flat, Roller, & Grip)

#### Series 6990 (2.25" Pitch)



Replaces Rexnord  
6999 & 6995  
(Flat & Textured)



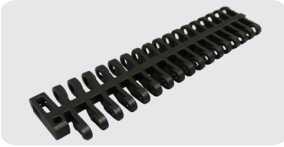
A CHIORINO GROUP COMPANY



## CATEGORY 2

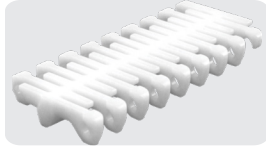
SAME SPROCKETS (WILL NOT SPLICE-IN)

**Series 700BHD**  
(1.07" Pitch)



*Replaces Intralox  
S900HDE*  
(Flush Grid & Raised Rib)

**Series 225**  
(2" Pitch)



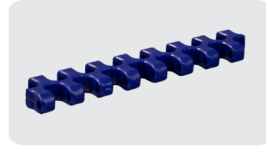
*Replaces Intralox  
S800*  
(Flush Grid & Flush Grid  
Dimple)

**Series 250**  
(2.5" Pitch)



*Replaces Intralox  
S1800*  
(Flat, Cone, & Mini Rib)

**Series 500BHD**  
(1" Pitch)



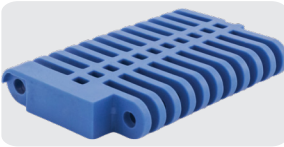
*Replaces Intralox  
S2400*  
(Radius Flush Grid, High  
Deck, & Grip)

**Series 900**  
(2" Pitch)



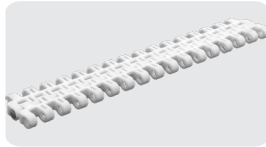
*Replaces Habasit  
M5020 & M5033*  
(Flat & Flush Grid)

**Series 901B**  
(2" Pitch)



*Replaces Intralox  
S400*  
(Flush Grid)

**Series 1200**  
(.5" Pitch)

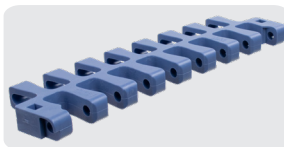


*Replaces Habasit  
M1220 & M1230 &  
Uni M-ONB*  
(Flat & Flush Grid)

## CATEGORY 3

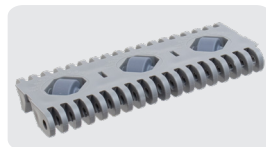
REQUIRES NEW SPROCKETS

**Series 300**  
(1.77" Pitch)



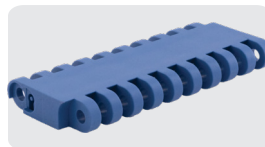
*Replaces Intralox  
S2200*  
(Radius Flush Grid & Grip)

**Series 400**  
(2" Pitch)



*Replaces Intralox  
S400*  
(ARB, TRT, & RT)

**Series 1600**  
(2" Pitch)



*Replaces Uni CPB*  
(Flat, Perforated Flat, &  
Textured)

**Series 1800**  
(2.5" Pitch)



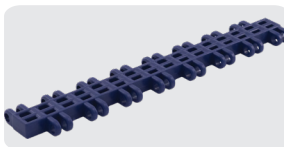
*Replaces Uni XLB*  
(Flat, Perforated Flat,  
Groove, & Textured)

**Series 2600**  
(1" Pitch)



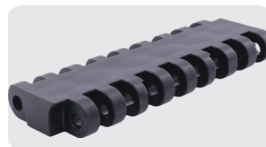
*Replaces Habasit  
F51 & Uni OWL*  
(Flush Grid)

**Series 3000**  
(1" Pitch)



*Replaces Uni SNB  
M2 34%*  
(Flush Grid)

**Series 6800**  
(1.5" Pitch)



*Replaces Uni ACB*  
(Flat & Textured Flat)