



SF-T95ORAM

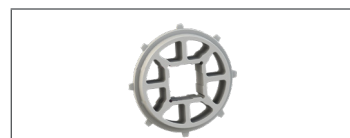
Roller Top 3" Pitch

Category 1 Replacement for:
Intralox S7000 Series

*Capped Rods



Pitch	Thickness	Min Width	Rod	Open Area	Flights	Side Guards
3.2"	.50"	11"	.22"	3%	No	No
81.1mm	12.8mm	279.4mm	5.8mm			



# of Teeth	PD	Bore Size
8	8.32"	60mm S

Belt Material	Standard Rod Material	Belt Strength		Temperature Fahrenheit		Belt Weight Lb/Ft ²	Colors
		Straight Lb/Ft	Curved Lb/Ft	Min	Max		
ULT	ULT	2001	-	32°	302°	3.7	G

W-White, B-Blue, DB-Dark Blue, RB-Royal Blue, N-Natural, G-Gray, BK-Black, BR-Brown, XMD-XRAY & Metal Detectable

Additional Sprockets Available

Belt Standard Alterations	+/- 2"
Flight Standard Indent	N/A



A CHIORINO GROUP COMPANY