

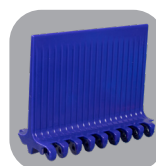
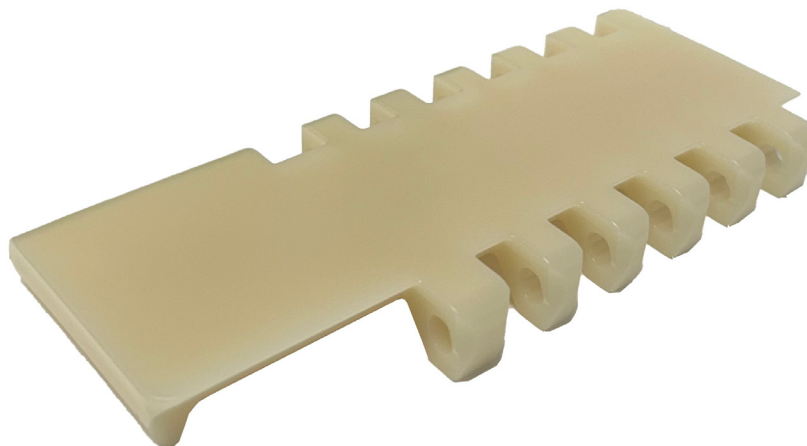


SF-225ASH

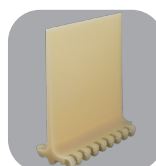
Sanitary Heavy Edge 2"Pitch

Category 1 Replacement for:
Intralox 800 Series
with Sanitary Heavy Edge
Open Hinge Flat Top

*Non-Headed Rods



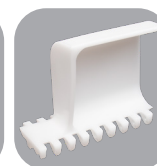
Cling-Free Flights
Up to 4" Tall



Streamline Flights
Up to 6" Tall

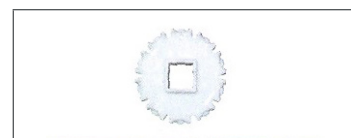


Scoop Flights
3", 4" and 6" Tall



Bucket Flights
3", 4" and 6" Tall

Pitch	Thickness	Min Width	Rod	Open Area	Flights	Side Guards
2"	.625"	10"	.24"	0%	Yes	No
50.8mm	15.9mm	254mm	6.1mm			



Belt Material	Standard Rod Material	Belt Strength		Temperature Fahrenheit		Belt Weight Lb/Ft ²	Colors
		Straight Lb/Ft	Curved Lb/Ft	Min	Max		
ULTRA-TUFF™	ULT	1186	-	32°	302°	2.57	B, W, N
ULT XMD™	ULT	1186	-	32°	302°	2.62	RB

# of Teeth	PD	Bore Size
6	4"	1"R, 1.5"S
8	5.2"	1"R, 1.5"S
10	6.5"	1.5"S, 2.5"S
12	7.7"	1.5"S, 2.5"S
16	10.3"	1.5"S, 2.5"S

W-White, B-Blue, DB-Dark Blue, RB-Royal Blue, N-Natural, G-Gray, BK-Black, BR-Brown, XMD-XRAY & Metal Detectable

Additional Sprockets Available

Belt Standard Alterations	+/- .65"
Flight Standard Indent	1.5", 2"



A CHIORINO GROUP COMPANY