

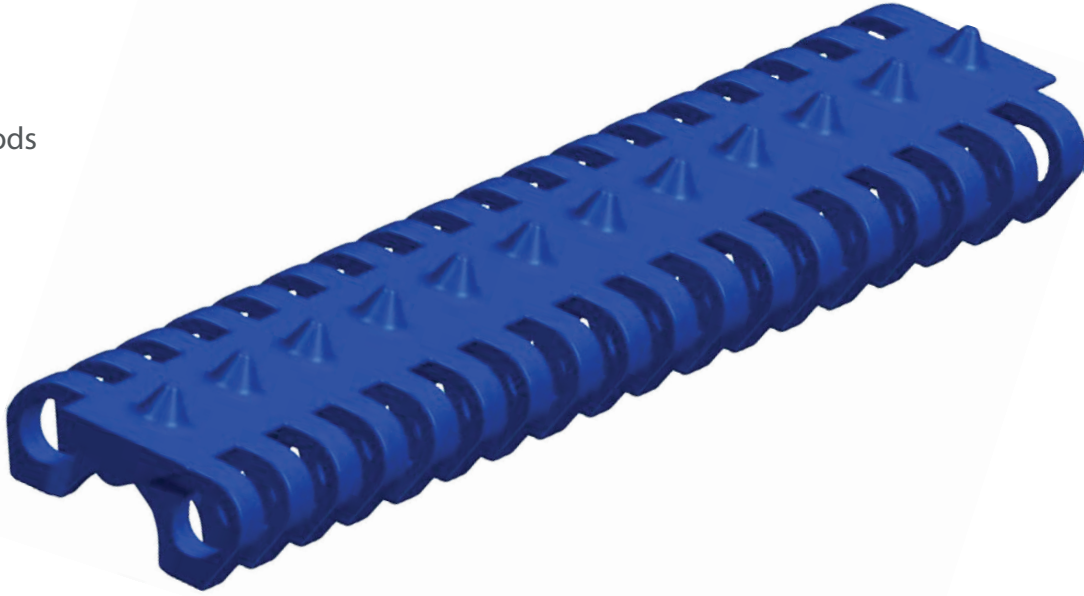
# SF-1100DN

## Standard Duty Cone Top

### .6" Pitch

Direct Replacement for:  
Intralox 1100  
Cone Top

\*Non-headed Rods



Pitch	Thickness	Min Width	Rod	Open Area	Flights	Side Guards
.6"	.370"	3"	.18"	0%	No	No
15.2mm	9.4mm	76mm	4.6mm			

Belt Material	Standard Rod Material	Belt Strength		Temperature Fahrenheit		Belt Weight Lb/Ft <sup>2</sup>	Colors
		Straight Lb/Ft	Curved Lb/Ft	Min	Max		
PP	PP	1038	230	33°	230°	1.07	W, B, G
PE	POM	988	310	-76°	140°	1.23	N, B
Acetal	POM	1109	330	-40°	150°	1.54	W, B
Nylon	PA	1052	613	33°	356°	1.43	BR
ULTRA-TUFF™	POM	1098	310	30°	302°	1.52	N, DB
ULTRA-TUFF XMD™	POM	1098	310	30°	302°	1.55	RB

BW = Belt Width, W-WHITE, B-BLUE, DB-DARK BLUE, RB-ROYAL BLUE, N-NATURAL, G-GRAY, BK-BLACK, BR-BROWN

# of Teeth	PD	Bore Size
12	2.28"	1"R,
16	3.07"	1"R, 1.5"S
24	4.65"	1"R, 1.5"S
32	6.22"	1"R, 1.5"S
18-2R	3.48"	1.5"S
20-2R	3.8"	1.5"S
26-2R	5.06"	1.5"S
32-2R	6.18"	1.5"S

Special Order Sprockets Available

Belt Standard Alterations	+/- 1"
Flight Standard Indent	+/- 2"



**SAFARI** Belting Systems, Inc.  
Conveying Innovation to Industry